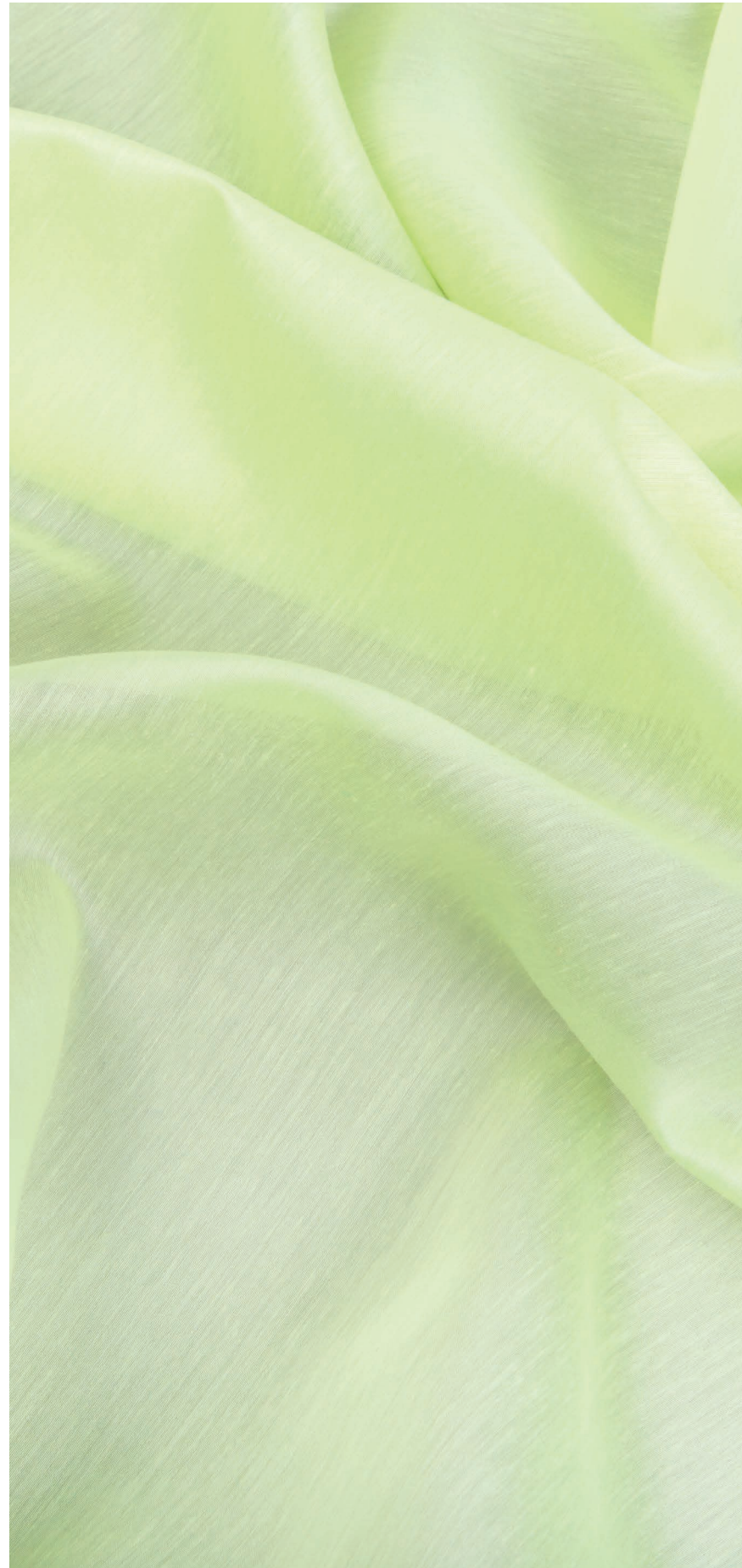


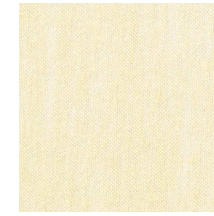
Mira X Aqua 7155



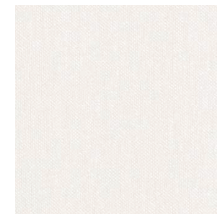
weiss
80



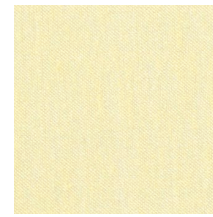
egg
82



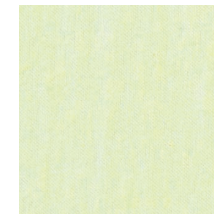
weizen
36



leinen
83



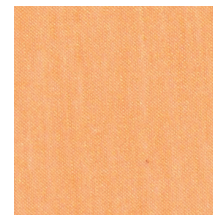
sun
52



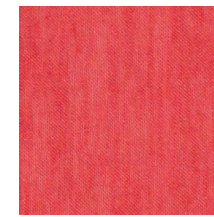
limone
14



beige
34



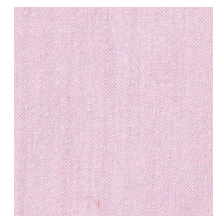
mandarin
59



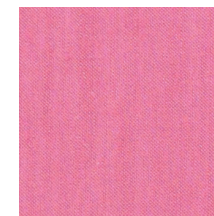
rot
28



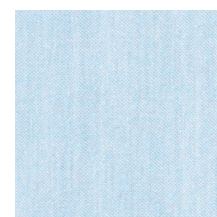
grau
62



flieder
23



pink
26



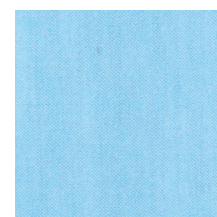
sky
73



stone
66



hellbraun
40



hellblau
77

Ein schönes Grundgewebe aus 100% PES Trevira CS. In dezentem weiss oder fröhlichen Farben kann der Stoff in Kombination mit Ausbrenner oder als schöner Uni Artikel eingesetzt werden.

A fine base weave made from 100% PES Trevira CS. Available in delicate white or cheery colors Aqua can be combined with burnout fabrics or used as a beautiful plain curtain fabric.

Produkt Nr. / Product No.	100244
Breite / Width	300cm
Anzahl Colorits / No. of Colors	16
Querverarbeitung / Usable in both directions	ja / yes
Schallabsorption / sound absorption	aw 0.15
Material / Material	100% PES Trevira CS
Gewicht ca. / Weight approx.	57g/m ² / 57g/sq.m
Einsprung ca. / Shrinkage approx.	1.5%

