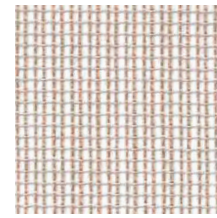
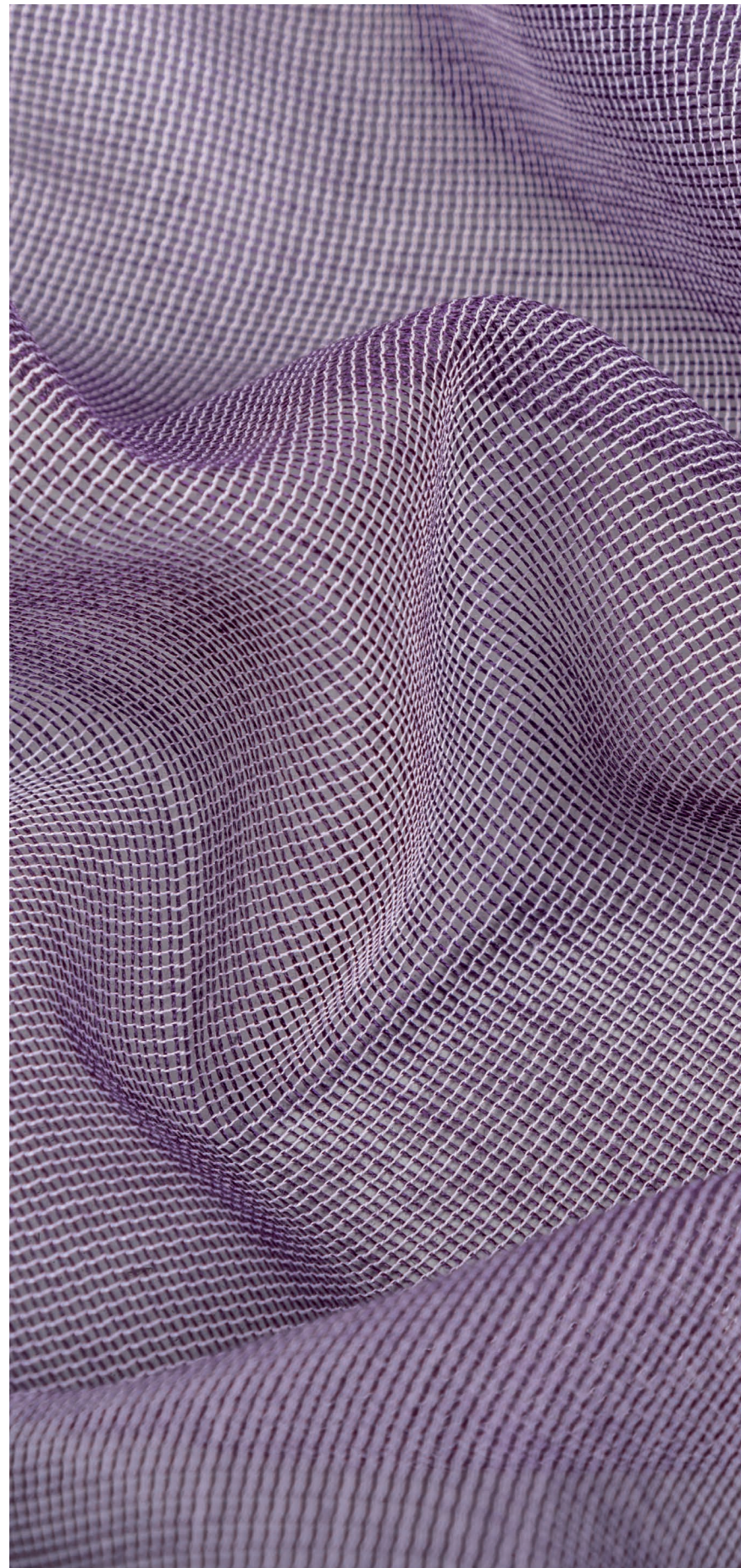
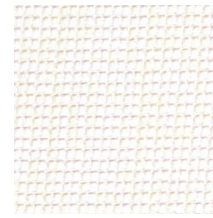


# Mira X Emmi 7288



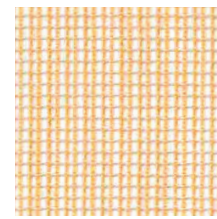
hellbraun  
40



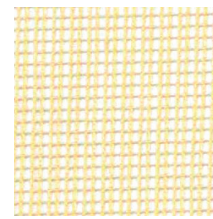
offwhite  
81



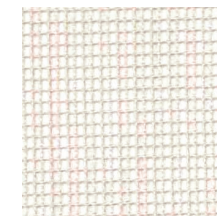
weiss  
80



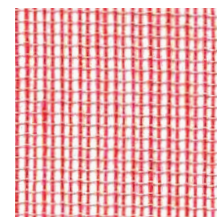
gold  
51



gelb  
50



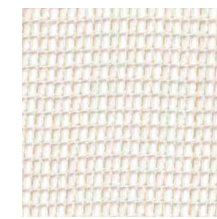
perle  
83



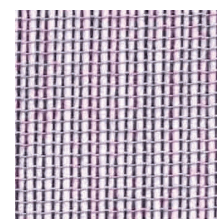
rot  
21



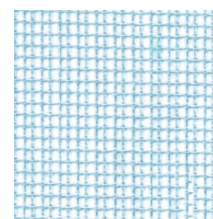
lemon  
11



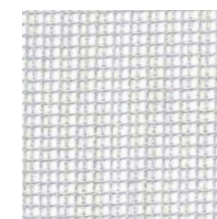
crème  
82



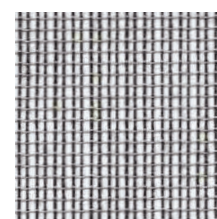
aubergine  
75



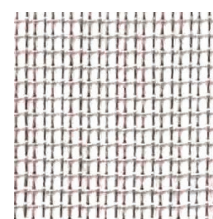
hellblau  
71



hellgrau  
61



dunkelbraun  
49



asche  
42

Ein interessanter Stoff, der in traditioneller Dreher Technik hergestellt wird. Ein transparentes Gewebe mit körnigem Charakter, leicht rustikal in der Anmutung. Emmi wird ebenfalls mit der Schiebefest-Ausrüstung versehen.

An interesting fabric manufactured in a traditional, special technique. A transparent weave with a grainy look imparting a rustic impression. Stretch-resistant.

Produkt Nr. / Product No.	100351
Breite / Width	300cm
Anzahl Colorits / No. of Colors	14
Querverarbeitung / Usable in both directions	ja / yes
Material / Material	100% PES Trevira CS
Gewicht ca. / Weight approx.	70 g/m <sup>2</sup> / 70 g/sq.m
Einsprung ca. / Shrinkage approx.	0.5%

